

RF-SNMP

Precision RF power probe

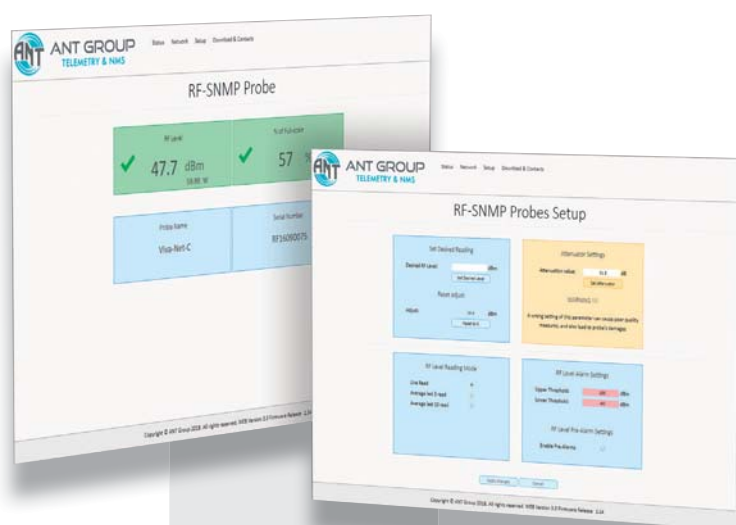
The probe RF-SNMP is the evolution of the ANT 131 Precision RF Power Probe. In addition to the precision that has always distinguished the ANT131 probe, RF-SNMP is easy and very quick to install.

It does not require any power input connection, in fact the new RF-SNMP is powered through the LAN cable via POE (Power over Ethernet) and all adjustments are performed via SNMP or web page.

Very high measurement precision and very wide dynamic range make this probe the best choice for transmission systems measurements both at the transmission and at the reception end. RF-SNMP is designed for precision measurement of analog as well as digitally modulated signals. The dynamic range is more than 50dB and its bandwidth is extremely high.



80x 55x 25 mm



INPUTS

Power Range	-40/ +30dBm
Input type	Digital or analog signals (waveform and modulation independent)
Frequency Range	50 MHz up to 4 GHz
Attenuator	0 - 31dB in 0.5 dBm step (software selectable)
Precision	1 dBm (50 MHz up to 2 GHz)

CONNECTIONS

RF input	BNC male (50 MHz up to 1 GHz)
RF input	SMA male (1 up to 4 GHz)
Ethernet/PoE	RJ45

MISCELLANEOUS

Communication	SNMP protocol, HTTP
Alarms	SNMP Trap with programmable thresholds and polarity
Readings units	dBm, W or KW selectable
Setup	Through Web page and SNMP
Software	Remote upgrade capability

POWER SUPPLY

PoE	PoE 802.3af (class 0) Power can also be supplied through a 48 Vdc / 0.25 A power injector
-----	--

ORDERING CODES

RF-SNMP RF Power Probe Meter 50MHz - 4GHz